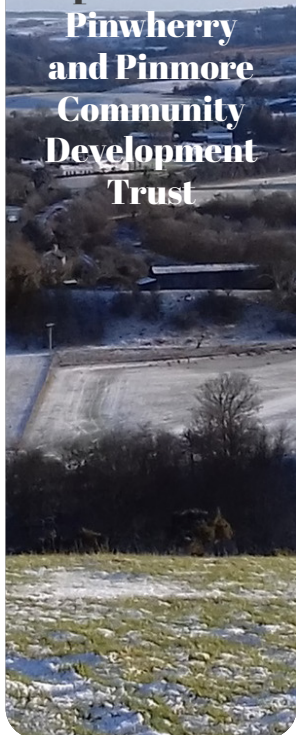


FEBRUARY  
2026



Welcome to  
the community  
newsletter  
update from  
**Pinwherry  
and Pinmore  
Community  
Development  
Trust**



#### PPCDT Trustees

Marie McNulty (Chair)  
Janette Gates (Secretary)  
Ann Berry (Treasurer)  
Joe Rigby  
Jean Wyllie  
David Walker  
James Stewart

#### PPCDT Project Enquiries

Amy-Dee Watson  
Community Project  
Officer  
[ppcdtprojectofficer@  
gmail.com](mailto:ppcdtprojectofficer@gmail.com)



Pinwherry and  
Pinmore  
COMMUNITY DEVELOPMENT TRUST

# NEWSLETTER

 The Auld School Community Centre, Main Street, Pinwherry, KA26 0RN

 [ppcdtprojectofficer@gmail.com](mailto:ppcdtprojectofficer@gmail.com)

 [www.pinwherryandpinmore.org.uk](http://www.pinwherryandpinmore.org.uk)



## Changing Places Toilet

We are delighted to let you know that Pinwherry and Pinmore Community Development Trust has received funding through the Scottish Government's Changing Places Toilets Scotland Fund, which is administered by Inspiring Scotland.

This funding will help us progress plans to install a Changing Places Toilet, providing fully accessible facilities for people with complex care needs and their families. These toilets make a real difference, enabling more people to enjoy community spaces and travel with dignity.

Once installed, the Changing Places Toilet will be available to the general public and will be opened and closed daily by volunteers and maintained by PPCDT.

We are also hoping to secure some match funding to install an additional standard toilet and sink that could be used during community events on the field.

We'll keep the community updated as this project develops.

*(Photo below is an example of a Changing Places Toilet).*



## Former Nursery Building Update

South Ayrshire Council approved PPCDT for support via the Ambition Programme for funding for SAC-approved consultants to undertake a feasibility study on the former nursery building adjacent to The Auld School Community Centre. We were paired with Colin McNally of CJM Lumina and he and his team developed the feasibility study, which included a comprehensive community consultation. The full feasibility study is available on our community website – [www.pinwherryandpinmore.org.uk/documents](http://www.pinwherryandpinmore.org.uk/documents) and a two-page summary document is included as an insert with this newsletter.

# Funding Success

We have been successful in our application for funding from Carrick Futures to extend our Community Project Officer post by a further two years.

Our Project Officer will undertake the following:

- Action the outcomes of the nursery building feasibility study and bring the wishes of the community to fruition in a sustainable and environmentally conscious way.
- Develop our Community Resilience Project plan, including a community study trip; a strong priority in our 2025 community consultation.
- Develop a marketing and communication strategy for The Auld School Community Centre, to ensure the building is promoted widely to community groups, not-for-profit organisations and local businesses across the Stinchar Valley.
- On-going support and capacity building for the Trust, including governance, volunteer development and working towards sustainability.

You can contact Amy-Dee Watson, our Community Development Officer, at: [ppcdtprojectofficer@gmail.com](mailto:ppcdtprojectofficer@gmail.com)

## What can YOU get as a Resident of Pinwherry and Pinmore?

### Small Grants for Community Groups

Did you know that community groups located in Pinwherry and Pinmore can apply for up to £1,000 from Pinwherry and Pinmore Community Council for activities or venue hire costs? Email [ppcc@pinwherryandpinmore.org.uk](mailto:ppcc@pinwherryandpinmore.org.uk) for a form. PPCDT's Project Officer can also provide support with completing your funding application.

### Training and Education Fund for Residents

Pinwherry and Pinmore residents can apply for up to £3,000 (over 3 years or 3 applications) from the Hadyard Hill Education and Training Fund to access training or education. Courses supported can be on a full time or part-time basis and may be; Apprenticeships, SVQs, NCs, HNCs, HNDs, short vocational courses and many others including driving lessons. The grant can pay for costs directly relating to attending a course, for example course fees, digital equipment, specialist equipment, travel, accommodation costs etc. Apply online, or email: [grants@foundationscotland.org.uk](mailto:grants@foundationscotland.org.uk) for more information.

## Pinwherry and Pinmore Community Resilience Project

PPCDT has now purchased all of the equipment granted via our funding from the Community Empowerment Fund to help make our communities more resilient during times of adverse weather. This includes a generator to power The Auld School Community Centre, plus torches, table lamps, phone charging station, long life batteries, large flasks, soup pans, gas stoves, gas canisters and newsletter printing and postage costs.

We are developing a Resilience Plan throughout 2026 and we have secured additional funding for a study trip to another community with an established resilience and community wellbeing plan. If you are interested in attending the potential study trip, or would like to volunteer to support the resilience project, please contact:

[secretary@pinwherryandpinmore.org](mailto:secretary@pinwherryandpinmore.org)

In the meantime, here's what will be available during power cuts and extreme weather:

- The Auld School Community Centre will become a warm hub, with hot soup and drinks. Device charging will be available.
- If you or someone in your house is vulnerable and/or unable to access The Auld School during poor weather and would like support, please contact 07714 759255 and we will do very our best to bring hot food and drinks, torches and battery lamps to you.

### TV License

Residents of Pinwherry and Pinmore who are over the age of 75 can apply to be reimbursed for their annual TV license. For more information, please contact David Hall on [davidhall315@aol.com](mailto:davidhall315@aol.com)

### Medical Travel

Residents of Pinwherry and Pinmore can be reimbursed for the cost of travel to medical appointments, either by public transport or by receiving mileage at 25p per mile. You can find the form and more information at [www.pinwherryandpinmore.org.uk/documents](http://www.pinwherryandpinmore.org.uk/documents).

### Subsidised Gym Membership

Pinwherry and Pinmore residents can have their gym membership at Quay Zone subsidised in full. Complete the form at [www.pinwherryandpinmore.org.uk/documents](http://www.pinwherryandpinmore.org.uk/documents) and take it along to Quay Zone to join.

# PPCDT Events Committee Update

## Wreath Making

Two very successful sessions were held and everyone went home with a beautiful Christmas wreath for their door. Thanks to our very own talented community member Liz Gregg (blooms\_by Liz) for preparing and delivering these sessions. Thanks also to Pinwherry and Pinmore Community Council for the grant to allow us to subsidize both of these sessions. Everyone enjoyed a glass of prosecco, tea or coffee and mince pie donated by PPCDT.

## Senior Afternoon Tea

Around 40 of our senior members of the Pinwherry and Pinmore area enjoyed an afternoon tea in The Auld School Community Centre on 6th December. The food was prepared and presented nicely in individual boxes by TraeBakes at Craigmains Garden Centre. Our thanks go to Fiona Stevenson and her staff for all their work in providing us with such a lovely afternoon tea. If you live in the Pinwherry and Pinmore area and are a lady aged 60 or over or a gentleman aged 65 or over and did not receive an invitation, we apologise. Please do not hesitate to message Morag on 07780632876 to have your name added to the list.

## Children's Party

This year our party took a different format and judging by the excitement in the hall, we believe it to have been a great success! The Road Runner, along with his helpers, kept the children entertained for the first hour. His enthusiasm and energy is amazing and before long he had all the kids joining in with him. This was followed by snacks and the annual visit from Santa. All children in our community from birth to age 16 are invited. If you have a child who was not invited, again we apologise and ask you to please get in touch with Morag on 07780632876 to have your child's name added to the list. Thanks to Pinwherry and Pinmore Community Council who provided

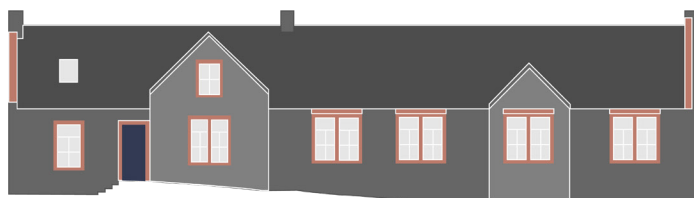


a grant to contribute towards the cost of the Christmas events. The remaining balance was taken from our fundraising events during the year.

## Save the Dates:

**PinFest** will take place in the marquee on Pinwherry field on **Saturday 18th July 2026**. Music will be provided by the very talented Shannon Bryden. Please look out for further details on the Pinwherry and Pinmore Facebook page at a later date.

**Nature Day** will take place on **Saturday 25th July 2026** on Pinwherry community field.



## THE AULD SCHOOL Community Centre

Room booking for local community groups is £5 an hour for any of the spaces (main hall, meeting room, lounge area). If you're a local resident with ideas of developing community activities at The Auld School, maybe a book club, local history, crafts, parent and toddler group etc, get in touch with PPCDT. Amy, our project officer, will be happy to talk through your idea and/or help with funding applications to Pinwherry and Pinmore Community Council to help set up your group and for room hire fees. Contact Amy at [ppcdtprojectofficer@gmail.com](mailto:ppcdtprojectofficer@gmail.com)

The Auld School Community Centre is also available to hire for private parties and functions, corporate events and meetings, commercial classes and workshops and hot desking. You can opt to hire the whole building, part of the building or just one room within the building. Please get in touch with [secretary@pinwherryandpinmore.org.uk](mailto:secretary@pinwherryandpinmore.org.uk) or speak to any Trustee.

## Regular Events at The Auld School

**Carpet Bowls** | 1st, 3rd & 4th Monday of the month | 7:30pm

**Pinwherry SWRI** | 2nd Monday of the month (Sep - May) | 7:30pm

**Work day Wednesday** | Wednesdays weekly | 10am - 3pm

**Back to Basics Fitness** | Wednesdays weekly | 7pm - 8pm

**Cosy Space** | Thursdays weekly | 2pm - 4pm

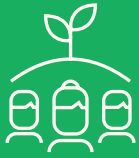
**PPCDT Board Meeting** | 2nd Thursday of the month | 7pm

**PPCC Meeting** | 3rd Thursday of the month | 7pm

**Wee Whist Drive** | 2nd Friday of the Month | 7:30pm

**Old Skool Social Night** | 4th Friday of the Month | 7pm - 10pm





## Community Benefit Fund



**Your project. Your community. Your fund.**  
Tell us what matters most in Pinmore & Pinwherry.

SP Energy Networks operates your electricity transmission network.

We are building a new project in your area:

### **Mark Hill Substation Upgrade.**

We have set up a Community Benefit Fund worth **over £500,000** to help local people benefit from new energy infrastructure.

It's available to help with projects that matter most to your area.



**But first, we need your help!** Tell us how the money should be spent to best support your community by **15 February 2026**.



Visit our project fund website and click on Pinmore & Pinwherry  
[spenergynetworks.co.uk/MarkHillCommunityFund](https://spenergynetworks.co.uk/MarkHillCommunityFund)



**Make your voice heard and do something great for your area!**



[communitybenefits@spenergynetworks.co.uk](mailto:communitybenefits@spenergynetworks.co.uk)



**020 3872 5895**



[spenergynetworks.co.uk/pages/community\\_benefits\\_funding.aspx](https://spenergynetworks.co.uk/pages/community_benefits_funding.aspx)